

2022 Annual Report

Clay County Sheriff's Office, established 1822

Table of Contents

Sheriff's Message	03	Detention Division	12
Mission, Vision, Values	04	Emergency Management	17
Organizational Chart	05	Logistical Support Division	19
Senior Commanders	06	Investigations Division	22
Bicentennial	08	Patrol Division	27
Staffing Stats	09	Support Services Division	39
Budget	11	Community Outreach	44

From the Sheriff



The year 2022 was an historic one for the Clay County Sheriff's Office as we celebrated 200 years of serving our community. A tremendous amount has changed since Sheriff Shubael Allen, featured on the cover, held the office as the second sheriff of our county in the late 1820s. (We unfortunately do not have a picture of the first sheriff, John Harris.) We have grown from a Wild West county on America's western-most frontier to a bustling part of the Kansas City metropolitan area with more than a quarter-million residents.

The Sheriff's Office is the largest law enforcement agency in the Northland, and we aim to be a model. This annual report demonstrates the standards of accountability and transparency to which we hold ourselves. Budget, staffing, reported crimes, detention population, civil orders served and so much more are all here.

There was much to take pride in during 2022. The Traffic Safety Unit's 133% increase in impaired driving arrests contributed to a 39% reduction in fatal traffic crashes. (p. 38) Our School Resource Deputies had a profound impact on the lives of students and staff in the North Kansas City School District. (pp. 36-37) The Sex Offender Registration and Enforcement Unit increased prosecutions of non-compliant sex offenders by 218%. (p. 26) We did unprecedented community outreach to warn about the deadly drug fentanyl. (p. 23) Our dispatchers answered 96.2% of all 911 calls within 20 seconds, exceeding the national standard. (p. 20) You'll find all of this and much, much more within this report.

Sheriff Will Akin



Mission Statement

**Embrace Change ...
Create Value ...
Inspire Others ...**



Vision Statement

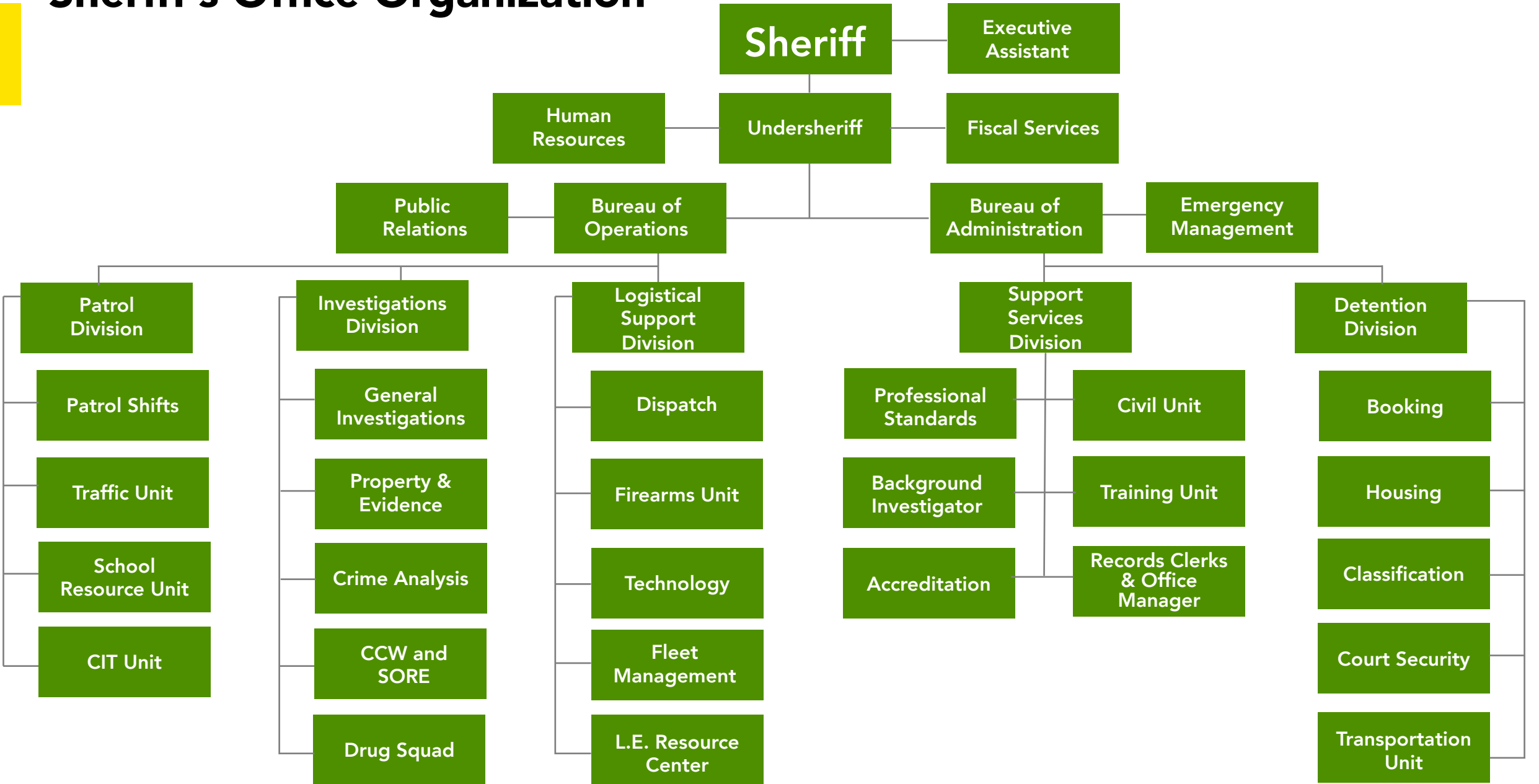
Bring Sheriff's Office and community together while serving with integrity and transparency.



Guiding Values

Respect, Accountability, Courage, Honesty, Integrity and Service

Sheriff's Office Organization



Senior Command Staff



LT. COL. JEFF SELF
Undersheriff



MAJOR PHIL COFFEY
Administration Bureau



MAJOR ROB HAYS
Operations Bureau



DIRECTOR MELISSA EVANS
Emergency Management Division



CAPTAIN AIMEE AGDERIAN
Fiscal Services

Senior Command Staff



CAPTAIN JON BAZZANO
Patrol Division



CAPTAIN RAY FRANKS
Detention Division



CAPTAIN BRYAN SAPP
Logistical Support Division



CAPTAIN JOHN TEALE
Support Services Division



CAPTAIN STEVE WILHELM
Investigations Division



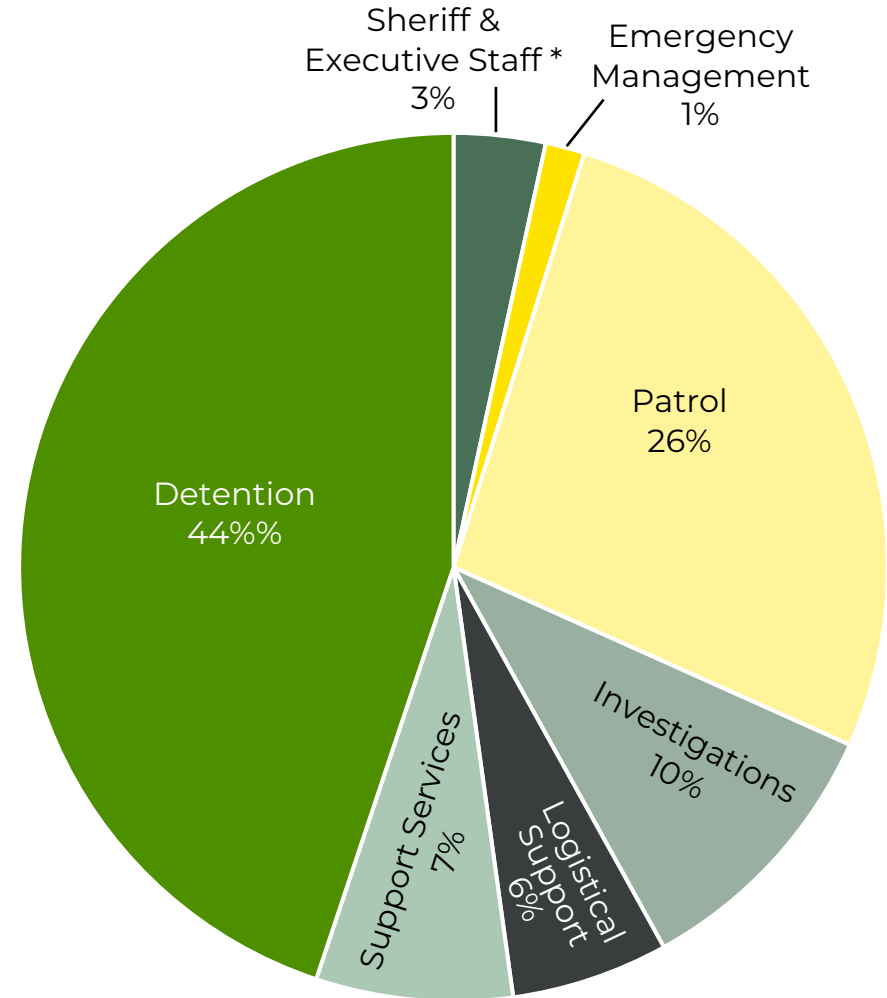
Bicentennial Celebration

The Clay County Sheriff's Office celebrated 200 years of service with a banquet for employees on April 1. The event featured dinner, an historical overview of how far the Office has progressed, and a keynote speaker. It also recognized the three living past sheriffs of the county: Frank Maudlin, Bob Boydston, and Paul Vescovo.



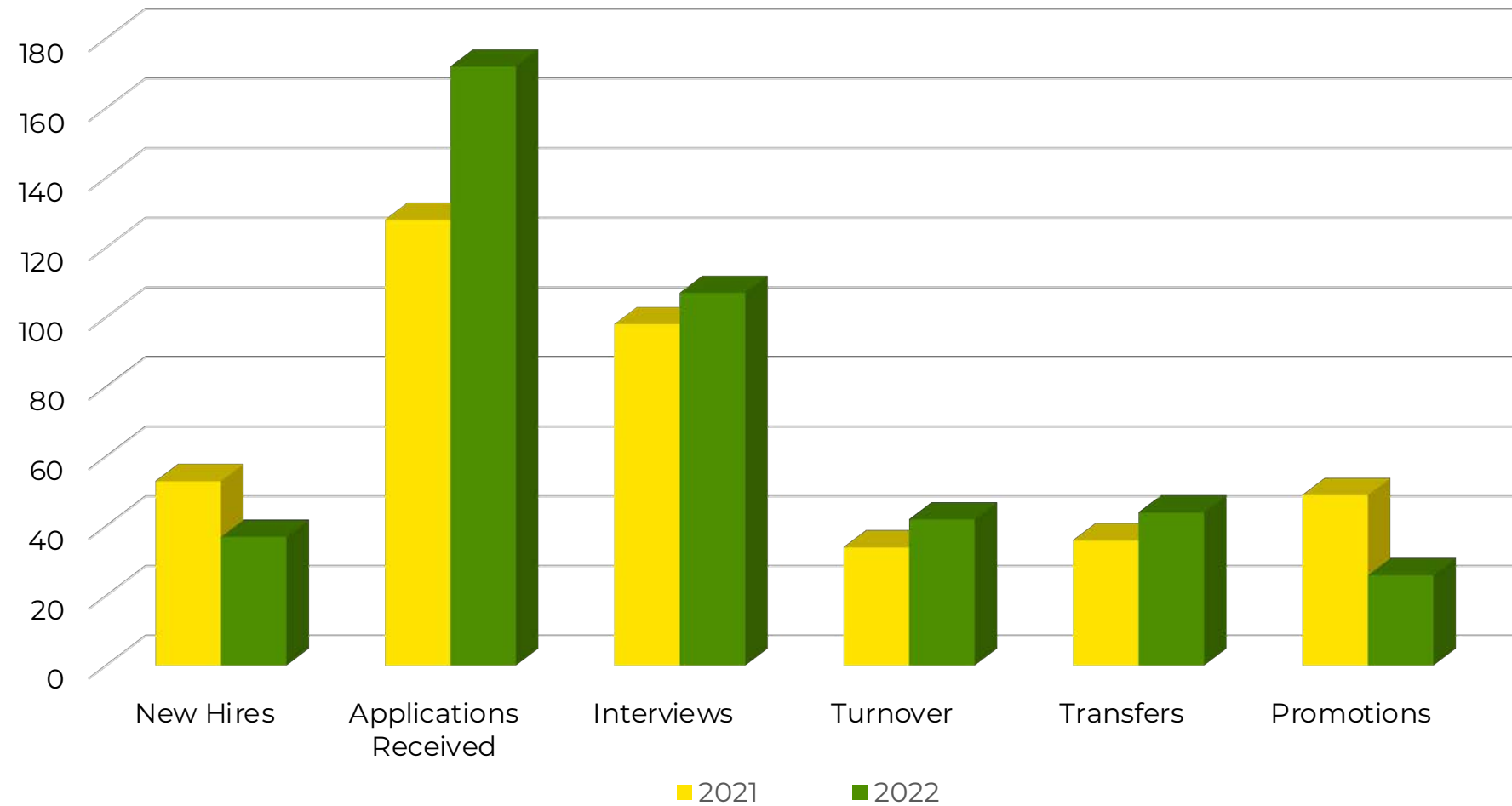
Staffing Breakdown by Division

As of Dec. 31, 2022, the Clay County Sheriff's Office employed 211 people in six divisions.

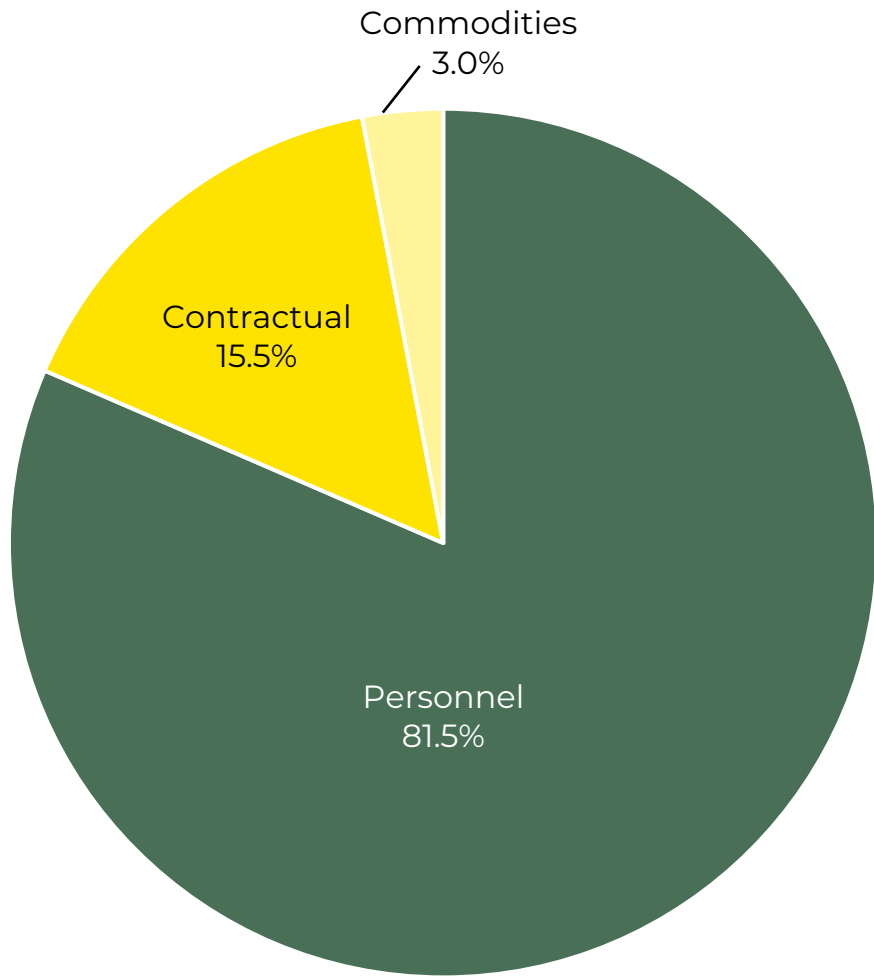


* This includes Fiscal Services, Human Resources and Public Relations.

Staffing Stats



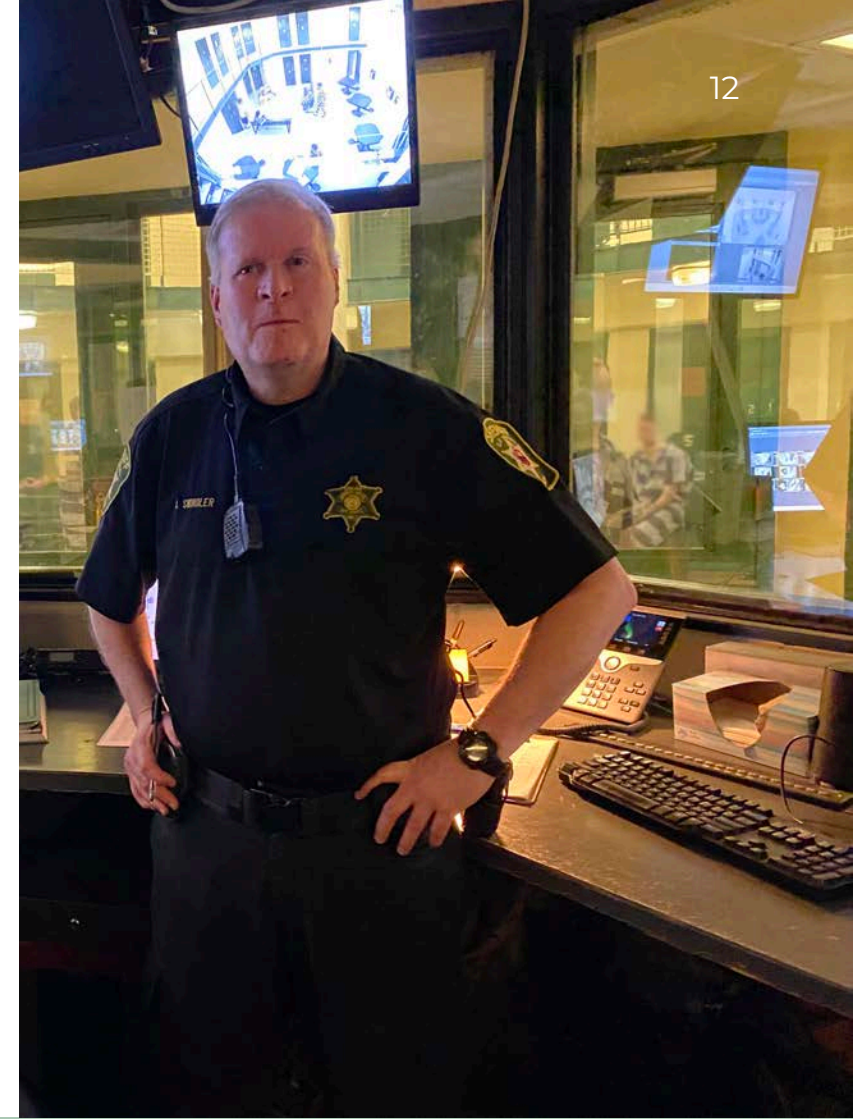
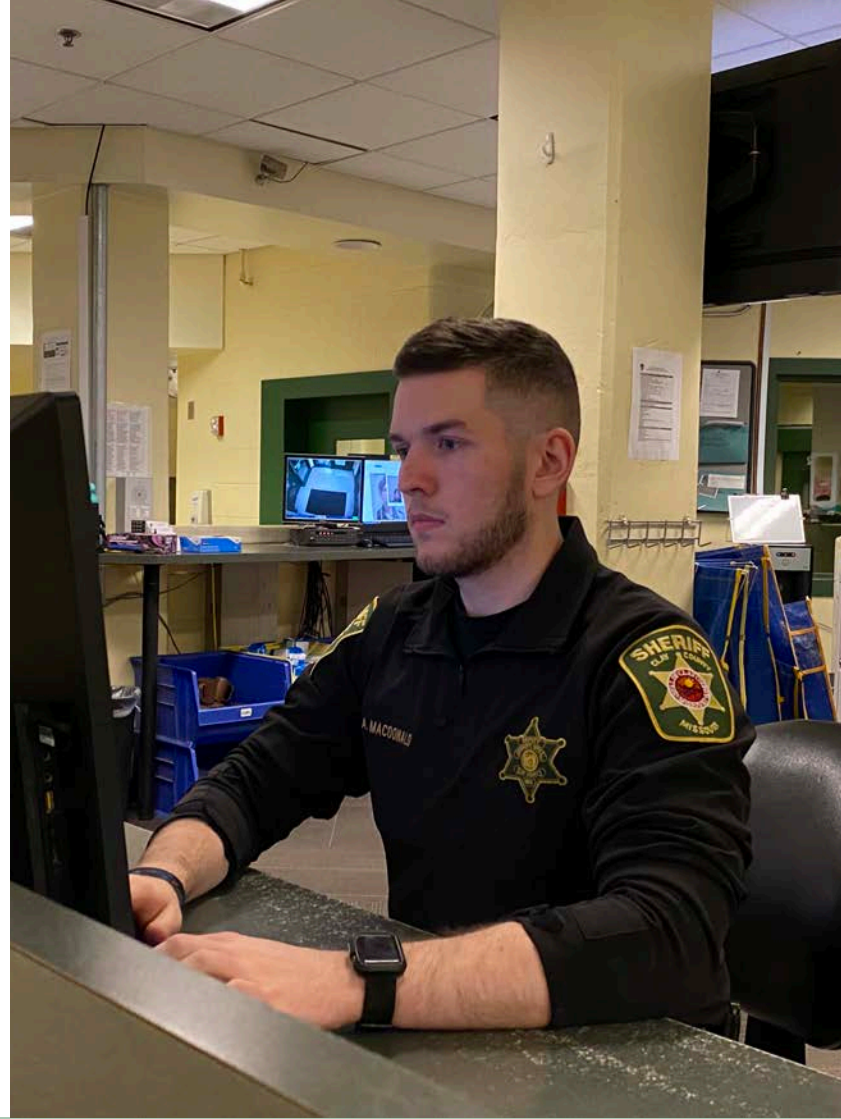
Budget



2022 Budget Allocation

Annual Budget by Year





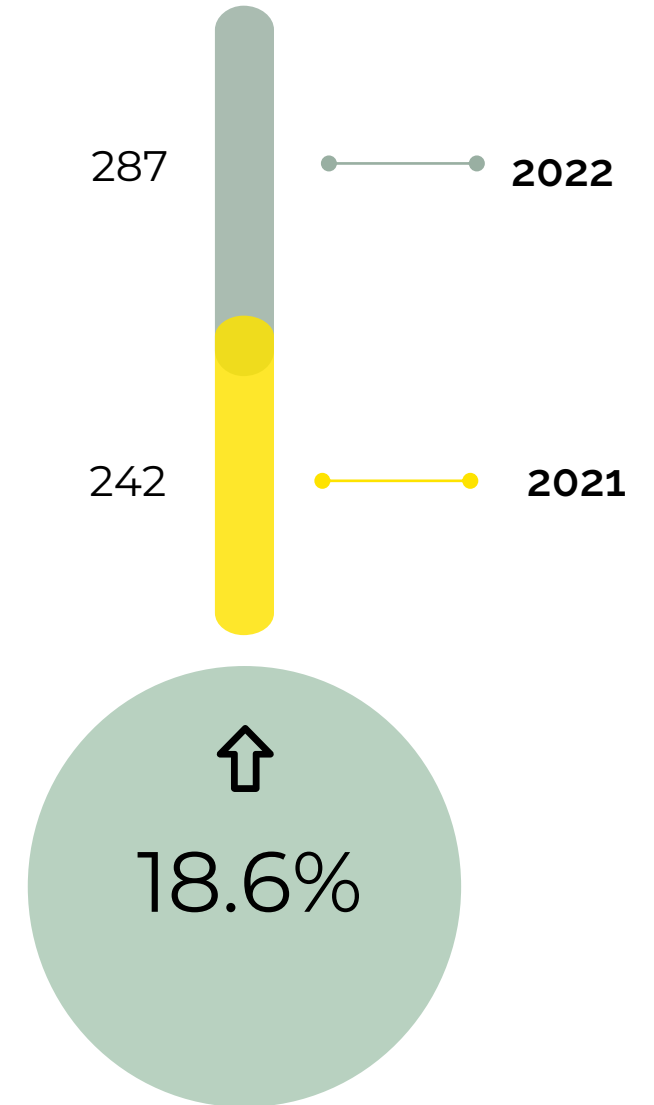
DETENTION DIVISION

- Booking Unit
- Classification Unit
- Court Security Unit
- Housing Unit
- Transportation Unit

Inmates booked and released



Average daily jail population



Detention Incident Reports

A 54.8% increase over 2021 reports.

664

Code Blues (Medical Issues)

Tracked since May 1, 2022

48

Assaults on Staff

Tracked since May 1, 2022

19

After-hours ex-partes

For the first time, Detention staff helped victims of abuse and harassment obtain emergency no-contact orders outside of business hours in 2022. Tracked since May 1, 2022.

80

Code Greens (Fights)

Tracked since May 1, 2022

89

Suicides Prevented

Suicide attempts physically interrupted or plans thwarted after speaking with Detention staff. Tracked since May 1, 2022.

135

Court Security Unit

The Court Security Unit provides security at the Clay County Circuit Court, and deputies serve as courtroom bailiffs.



6,287

Inmates transported to court. This is a 7.6% increase over 2021.

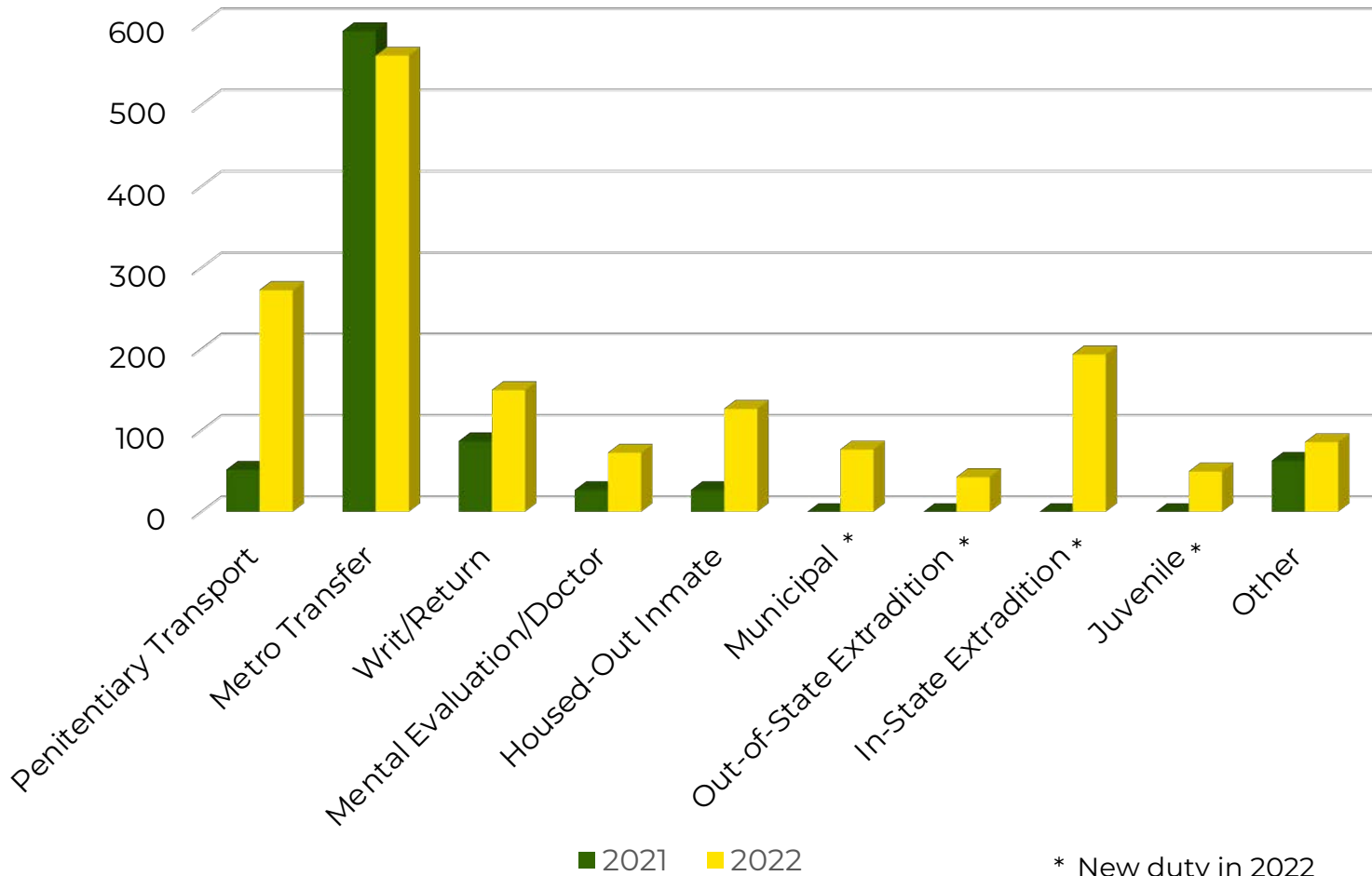
67,229

Total cases heard in court. This is a 4.2% decrease over 2021.

Transportation Unit

The Transportation Unit is responsible for all inmate movement. They ensure inmates are where they need to be, when they need to be. In 2022, they took on extraditions after the Fugitive Apprehension Unit dissolved, as well as several other additional duties.

Inmates transported by category



* New duty in 2022

Penitentiary Transport – Transportation to and from state prisons

Metro Transfers - Local transfers, including adjoining counties

Writ/Return – State Department of Correction inmates picked up and returned on a court-ordered writ to appear in person in Clay County Court.

Mental Evaluation – Generally transported to St. Joseph or Kansas City per court order for an evaluation.

Doctor Appointment – Scheduled by jail medical staff to an outside area medical facility

Housed-Out Inmate – Transporting inmates that are housed out at local facilities per the Detention Center’s request. The Transportation Unit provided for initial housing plus court returns.

Municipal – New in 2022, transport of inmates from area municipalities

Out-of-State Extradition – Returning inmates outside of Missouri to stand trial in Clay County.

In-State-Extradition – Returning inmates inside Missouri to stand trial in Clay County

Juvenile – New in 2022, transport of juvenile defendants



EMERGENCY MANAGEMENT

Accomplishments



Weather Radio Distribution

Distributed 150 weather alert radios to seniors and other community members with functional challenges



Detention Center Drug Exercise

Led a tabletop exercise to help all staff prepare for potential exposure to harmful illicit drugs



School Preparation

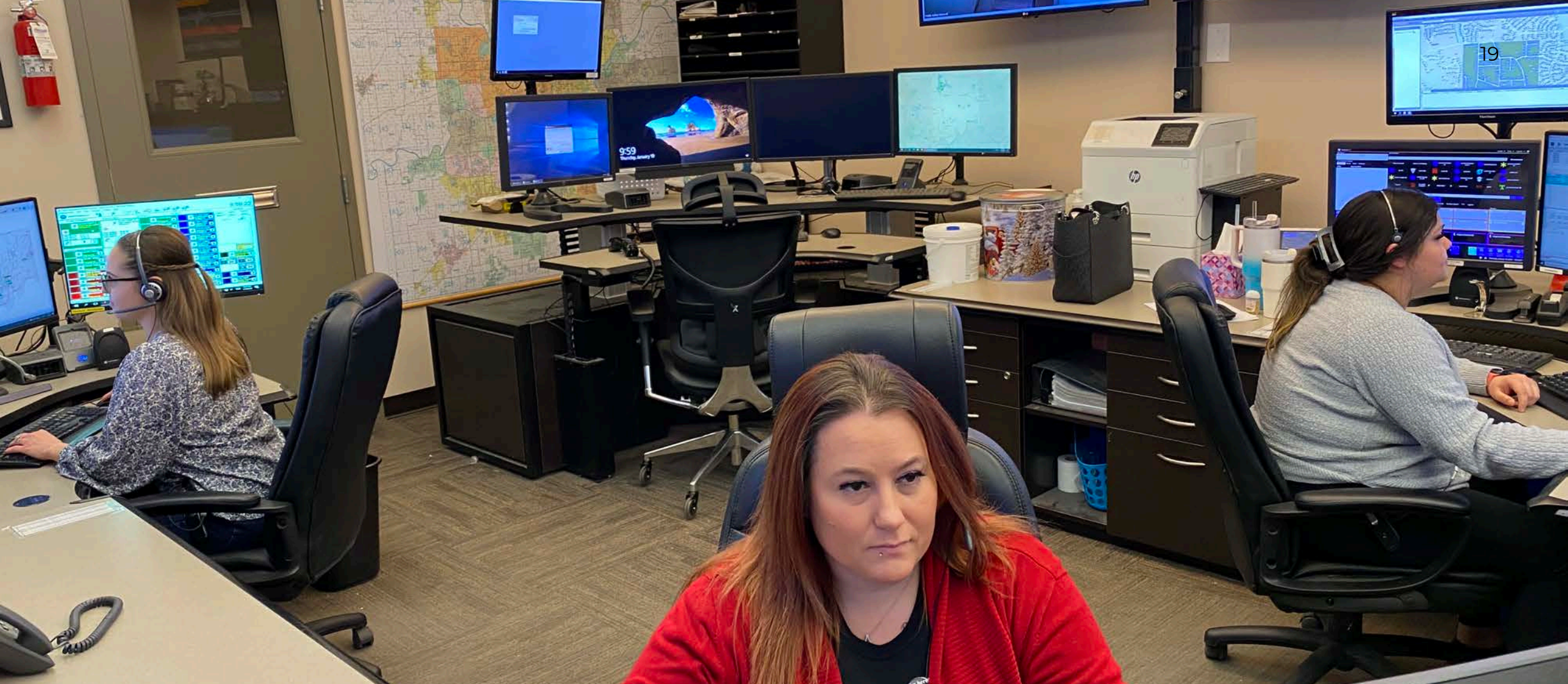
Assisted Smithville School District with emergency preparations and conducted tabletop exercises with North Kansas City Schools administrators



Vaccine Clinics

Arranged for two voluntary COVID-19 vaccine and booster clinics in the Detention Center, as well as for Clay County employees

The Clay County Emergency Management Team is dedicated to providing resources while raising awareness and serving our community. The Clay County Emergency Management team educates and informs our community and community partners with information on the National Planning Frameworks: Prevention, Protection, Mitigation, Response, and Recovery.

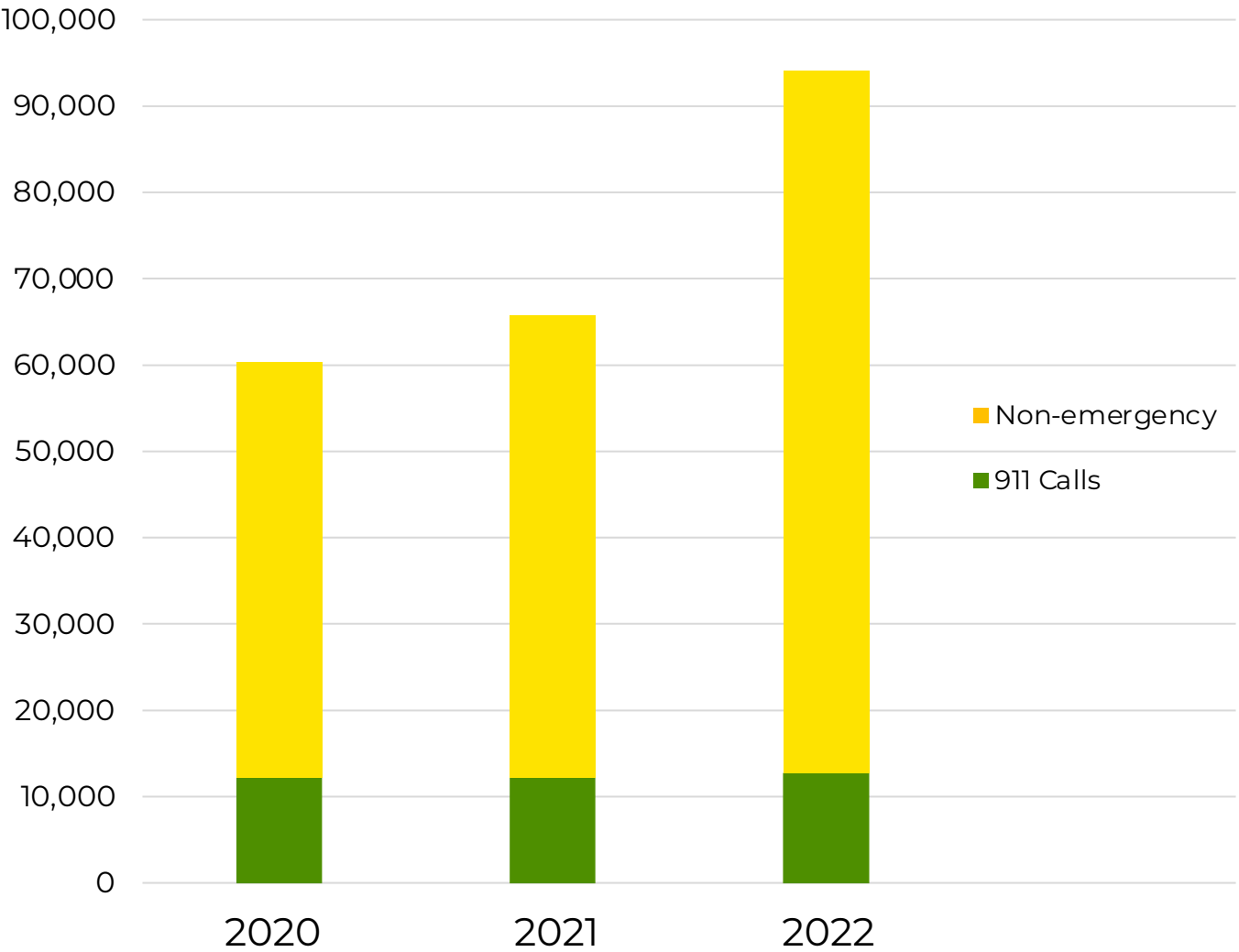


LOGISTICAL SUPPORT DIVISION

- Communications Unit
- Firearms Training Unit
- Fleet Management
- Law Enforcement Resource Center
- Technology Unit

Communications Unit

Calls Received in Communications Center

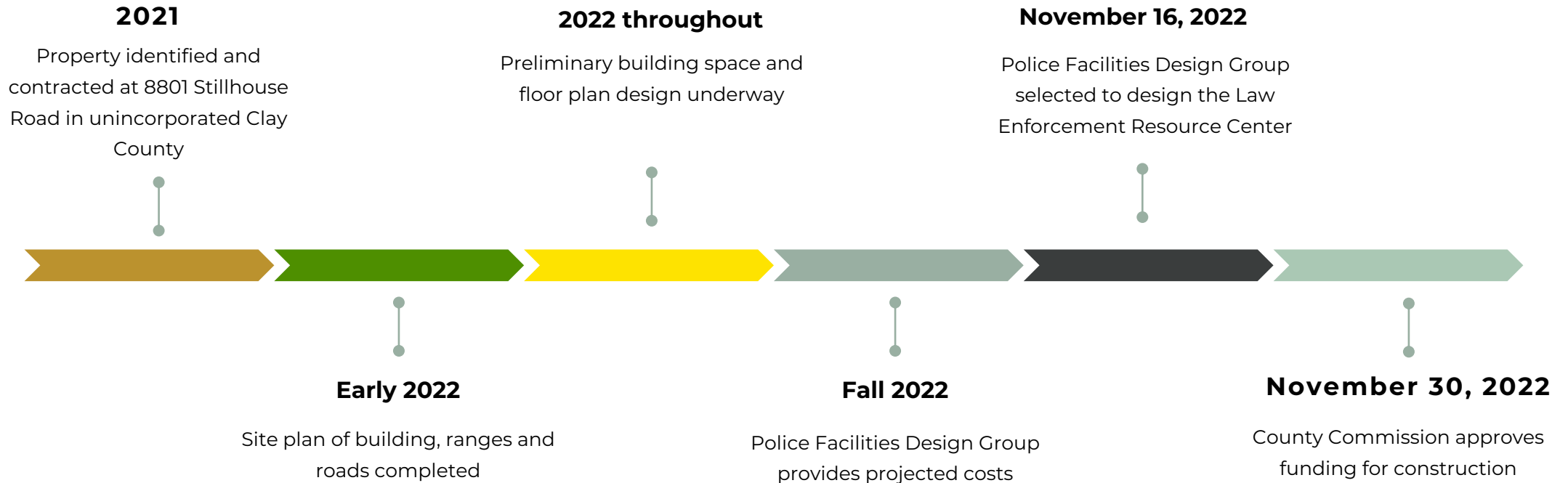


911 Call Answering Times



Law Enforcement Resource Center

The Law Enforcement Resource Center will serve as a training facility for the Sheriff's Office. It will include a covered firing range, classroom space for up to 50 people, a decision-based training area, tactical house and defensive tactics training room.





INVESTIGATIONS DIVISION

- Drug Task Force
- General Investigations
- Property and Evidence Unit
- Sex Offender Registration & Enforcement / Concealed Carry Weapons Unit
- Special Tactics and Response Team

Investigations Division

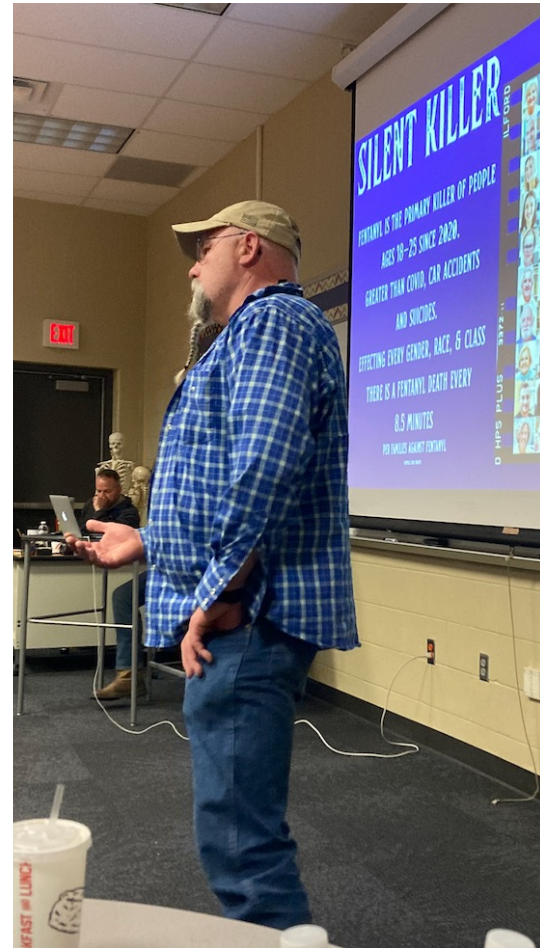


Victim identified in cold case

Investigators took a major step forward in solving the Sheriff's Office's coldest case by identifying the victim whose skeletal remains were found in rural southeast Clay County in 1985. She was Gwendolyn Robinson, who had gone missing from Kansas City in 1983.

Robinson's daughter approached Kansas City Police detectives in May 2022, who used a forensic sketch the Sheriff's Office had gotten created in 2017 to identify her mother as the victim. DNA confirmed it.

With this new information, the General Investigations Unit started piecing together 40 years of history to determine who killed Gwendolyn.



Outreach to stop overdoses

As the deadly drug fentanyl made its way into the illegal narcotic supply in Clay County, Sheriff's Office Drug Task Force detectives faced a mounting number of overdose death cases.

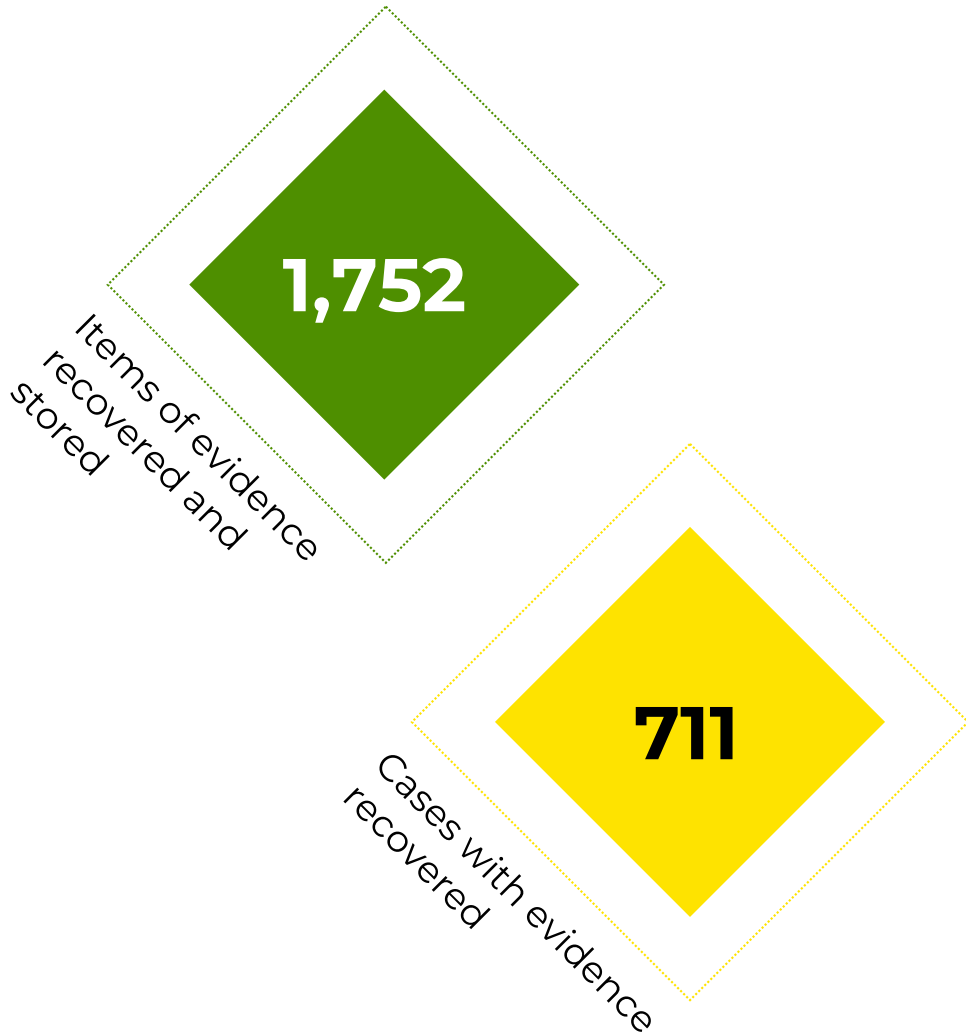
The Task Force embarked on a public education effort to let the community know what fentanyl does, how little of it is lethal, what it looks like and what signs of use to look for.

This included six public forums with community partners including drug treatment centers and recovering addicts. Task Force members visited dozens of high schools to teach about the drug's dangers and made numerous media appearances to inform the public.

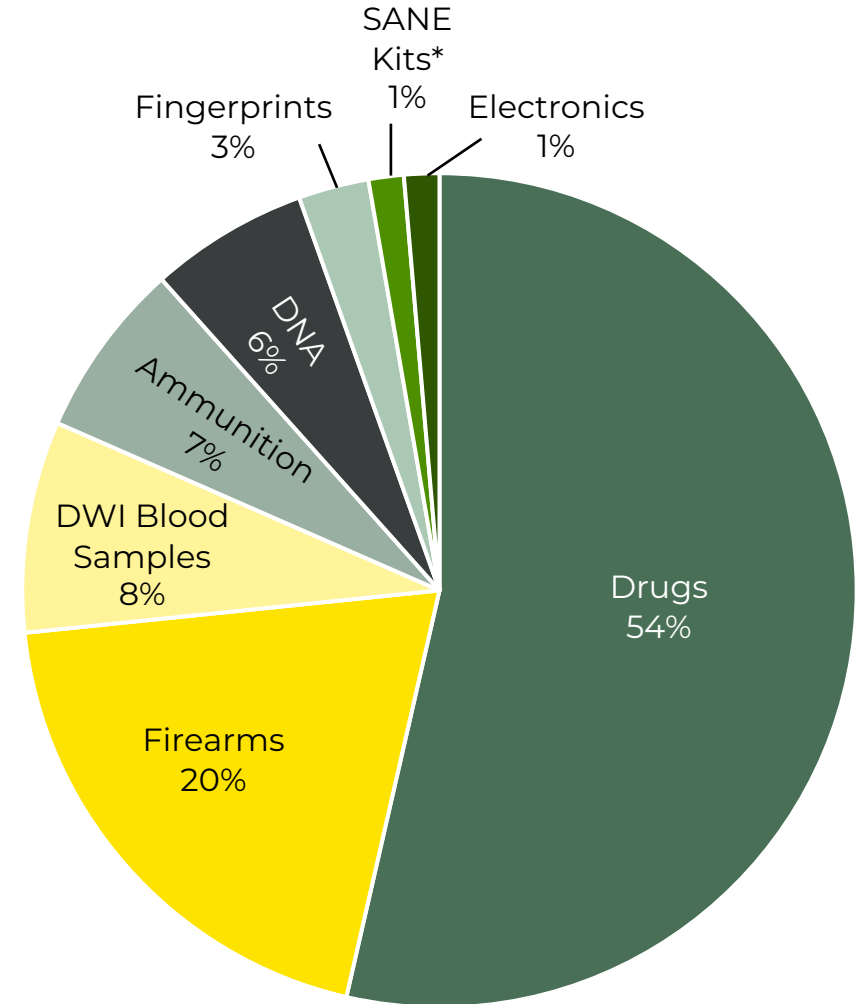
Case Report Status

Status	2021	2022	2021 to 2022 change
Closed by Arrest	406	520	28%
Charges Filed, Pending Arrest	15	19	27%
Closed	66	71	8%
Exceptional Clearance	3	6	100%
Inactive	162	123	-24%
No Crime Committed	551	494	-10%
Prosecutor Declined	22	19	-14%
Victim Declined Prosecution	73	82	12%
Open	466	483	4%
Referred to Drug Task Force	55	64	16%
Referred to Juvenile Court	92	106	15%
Referred to Other Agency	203	181	-11%
TOTAL	2,114	2,168	3%

Evidence Management

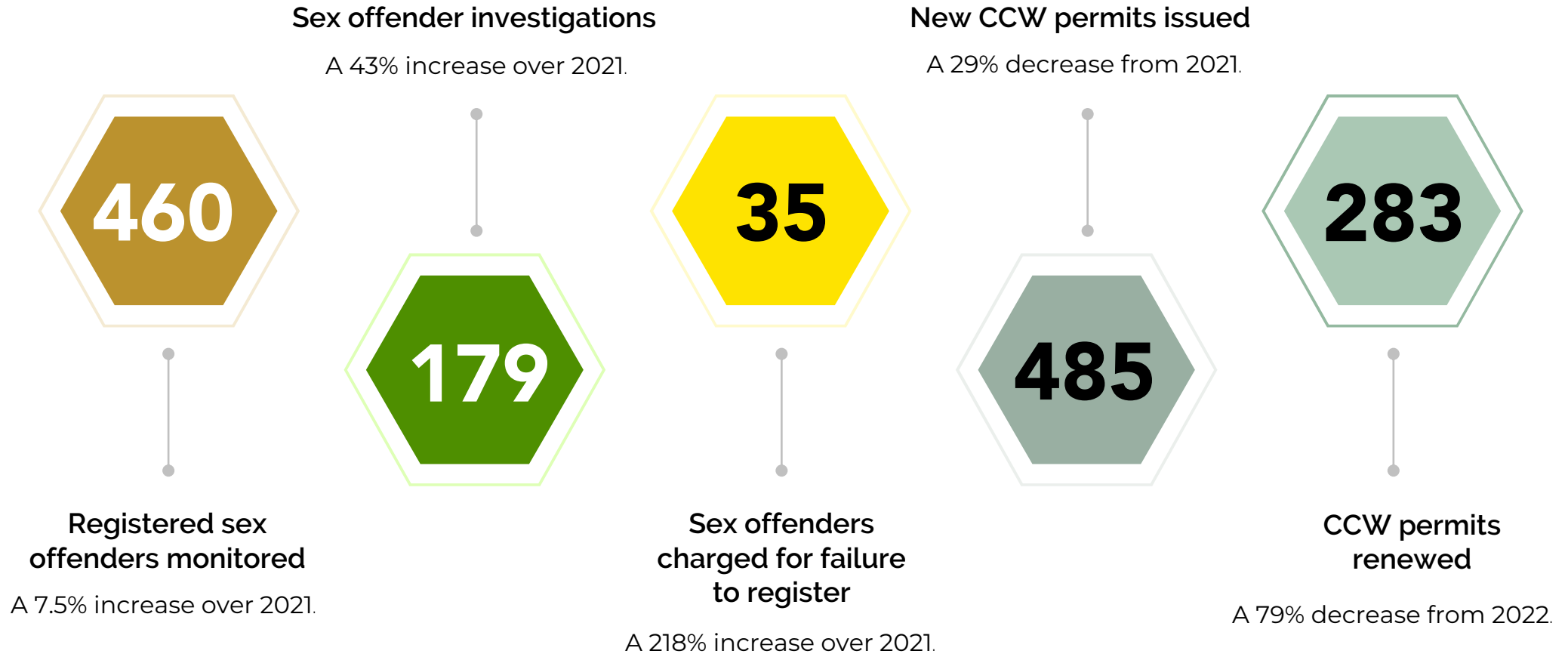


The Sheriff's Office sent 293 items of evidence to crime labs for analysis in 2022:



* Sexual Assault Nurse Examiner kits collected following a sexual assault.

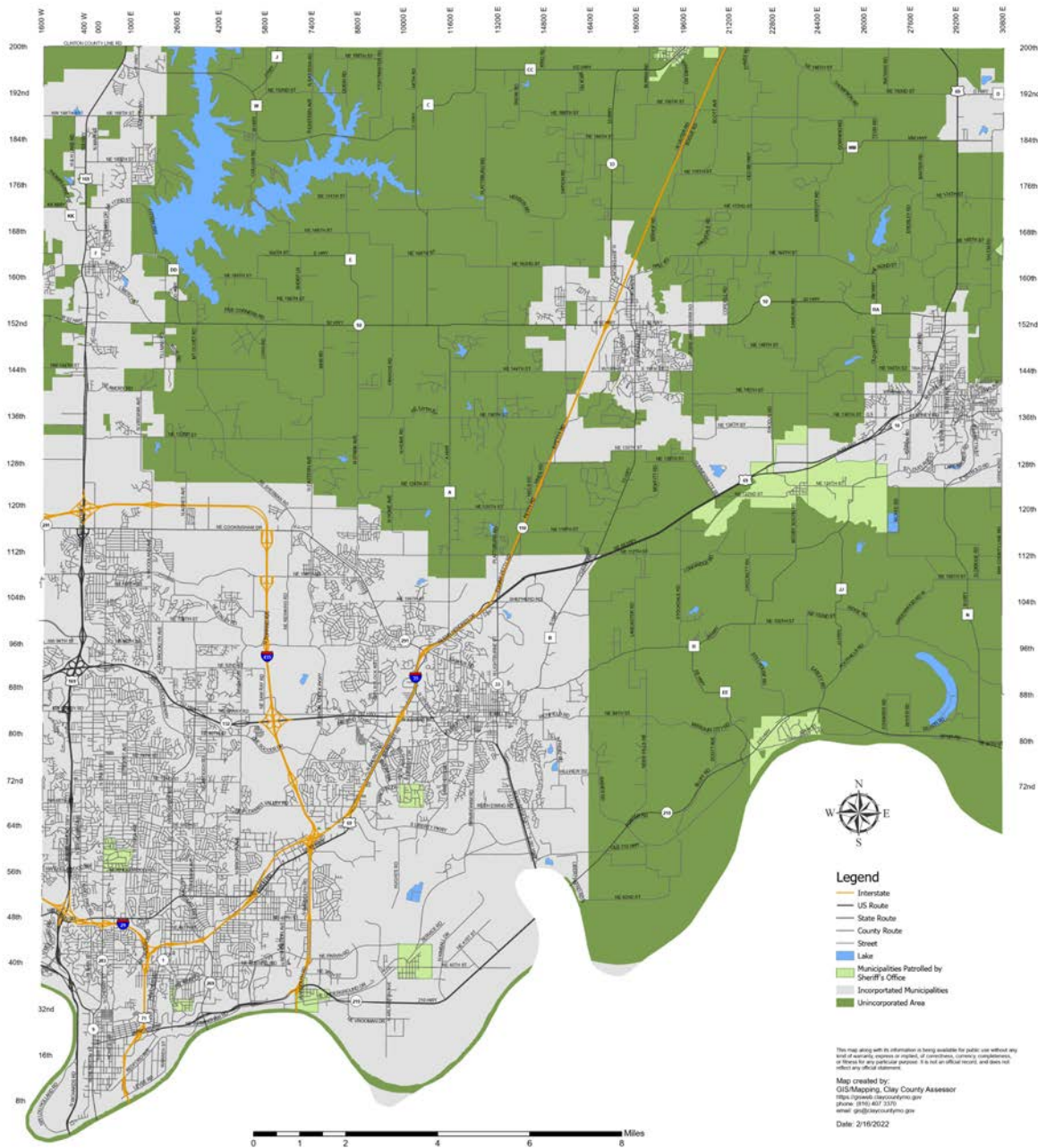
Sex Offender Registration and Enforcement / Concealed Carry Weapons Unit





PATROL DIVISION

- Crisis Intervention Team Unit
- Road Patrol
- School Resource Unit
- Traffic Safety Unit



Patrol Area

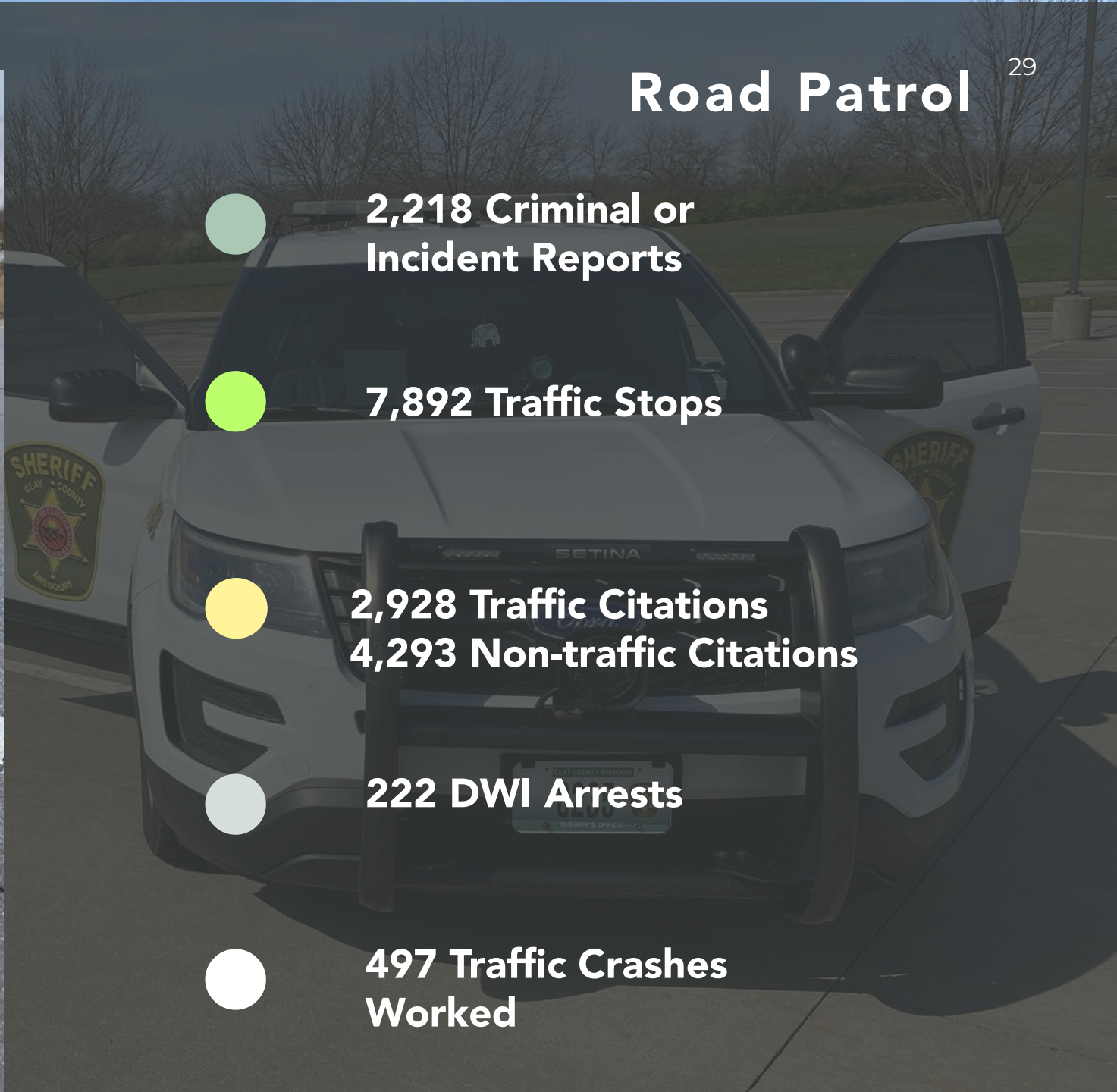
Clay County Sheriff's Office patrol deputies police unincorporated areas of the County (in dark green). They also patrol several small municipalities (in light green), including:

- Avondale
- Birmingham
- Excelsior Estates
- Glenaire
- Holt
- Missouri City
- Mosby
- Oakwood
- Oakwood Park
- Prathersville
- Randolph
- Village of Oaks

This map along with its information is being available for public use without any kind of warranty, express or implied, of correctness, currency, completeness, or fitness for any particular purpose. It is not an official record, and does not reflect any official statement.

Map created by:
GIS/Mapping, Clay County Assessor
1000 E. Grand, Clay County, MO
Phone: 660-667-3370
Email: gis@claycountymo.gov
Date: 2/16/2022

Road Patrol



2,218 Criminal or Incident Reports



7,892 Traffic Stops



**2,928 Traffic Citations
4,293 Non-traffic Citations**



222 DWI Arrests



497 Traffic Crashes Worked

Reported Incidents

Incident Type	2021	2022	2021 to 2022 change
Aggravated Assault	26	29	12%
All Other Larceny	46	38	-17%
All Other Offenses	412	306	-26%
Arson	3	0	-100%
Assist Other Agency	146	143	-2%
Bad Checks	1	1	0%
Burglary / Breaking and Entering	41	31	-24%
Crisis Intervention Team	42	69	64%
Civil Process	11	42	282%
Counterfeiting / Forgery	0	3	300%
Crash	192	198	3%
Credit Card / ATM Fraud	15	12	-20%
Destruction / Damage / Vandalism of Property	58	67	16%

Reported Incidents Continued

Incident Type	2021	2022	2021 to 2022 change
Disorderly Conduct	11	6	-45%
Dead Body	28	21	-25%
Driving Under the Influence	106	247	133%
Drug / Narcotics Violations	284	260	-8%
Drug Equipment Violations	110	111	1%
Failure to Register as a Sex Offender	12	33	175%
False Pretenses / Swindle / Confidence Game	16	6	-63%
Family Offenses - Nonviolent	46	54	17%
Fondling	5	9	80%
Hacking / Computer Invasion	1	1	0%
Identity Theft	15	12	-20%
Impersonation of a Law Enforcement Officer	4	2	-50%

Reported Incidents Continued

Incident Type	2021	2022	2021 to 2022 change
Informational Report Only	0	23	2,300%
Intimidation	0	8	8%
Kidnapping / Abduction	0	1	100%
Liquor Law Violations	9	7	-22%
Motor Vehicle Theft	39	20	-49%
Murder	2	0	-100%
Pursuit	102	92	-10%
Rape	4	6	50%
Robbery	3	3	0%
Sex Offense - Enticement	1	9	800%
Shoplifting	0	2	200%
Simple Assault	92	100	9%
Sodomy	2	2	0%

Reported Incidents Continued

Incident Type	2021	2022	2021 to 2022 change
Statutory Rape	2	3	50%
Stolen Property Offenses	70	65	-7%
Theft from Building	5	3	-40%
Theft from Motor Vehicle	34	24	-29%
Theft of Motor Vehicle Parts / Accessories	20	10	-50%
Tow-In	73	58	-21%
Trespass	3	12	300%
Weapon Law Violation	18	18	0%
Wire Fraud	5	1	-80%
TOTAL	2,115	2,168	3%

Canine Teams



652

Traffic stops by K9 handlers



220

K9 deployments



97

Arrests by K9 handlers



0

Canine apprehensions with a bite



Two Canine Unit deputies and their canine partners retired in 2022. Two more deputies joined the unit with two new dogs. Rogers Sporting Goods donated the funds to purchase one of the dogs.

Crisis Intervention Team Unit

In 2022, the Crisis Intervention Team Unit was composed of a C.I.T. deputy, a behavioral health clinician in partnership with Tri-County Mental Health, a critical incident response team K9 and her handler, and a supervisor.



146

CIT forms submitted by deputies to the Unit.



161

Follow-ups conducted with mental health consumers.



4

Members of the Sheriff's Office recognized at the Tri-County CIT (Tri-CIT) award ceremony:

- Sergeant Jeff Harman: Peer Supporter of the Year
- Lieutenant Tracy Wade: Detention CIT Personnel of the Year
- Corporal Bear McCulley: Youth CIT Officer of the Year
- Major Phil Coffey – recognition for two years as Tri-CIT Law Enforcement Chair



School Resource Unit

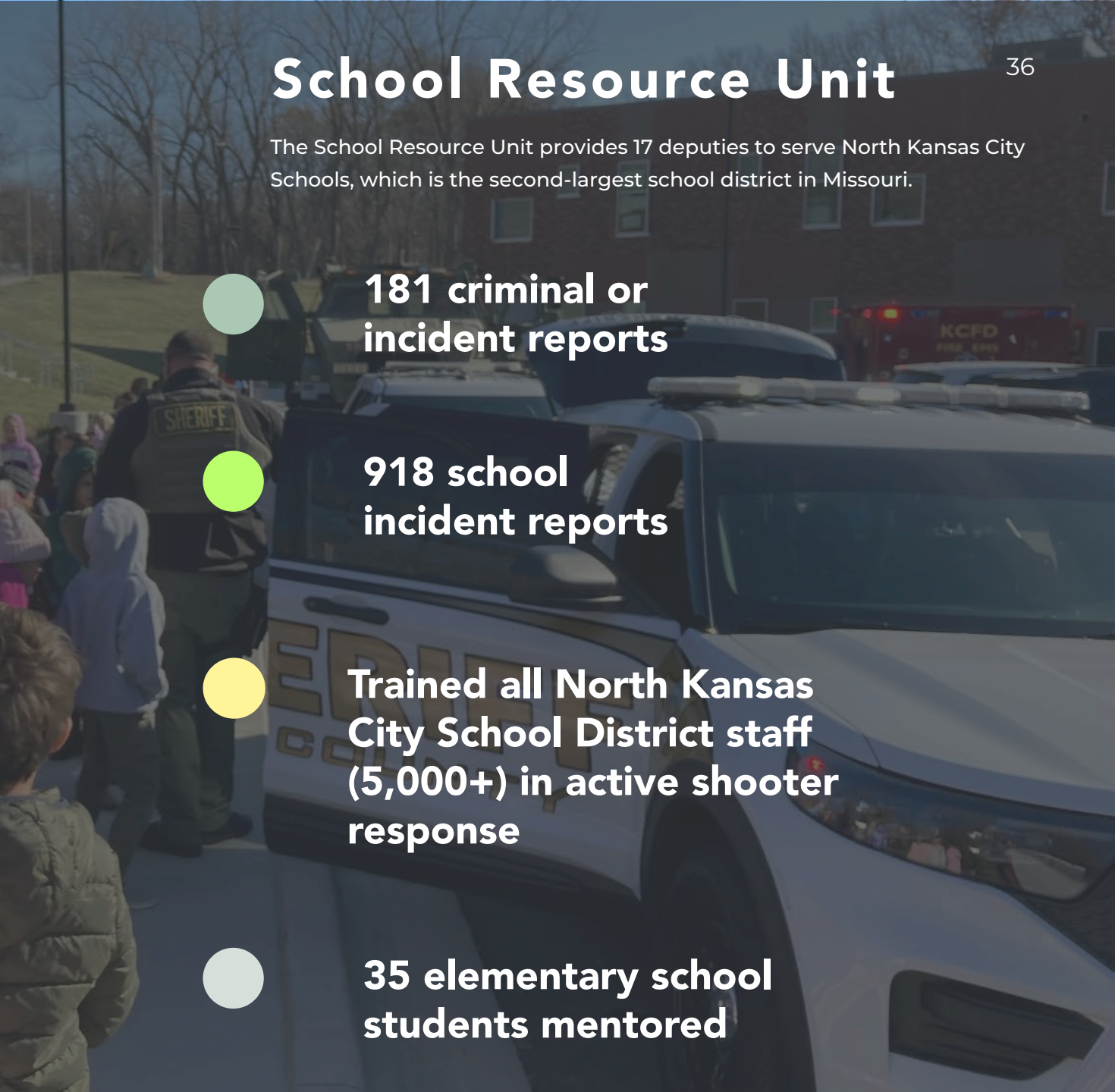
The School Resource Unit provides 17 deputies to serve North Kansas City Schools, which is the second-largest school district in Missouri.

181 criminal or incident reports

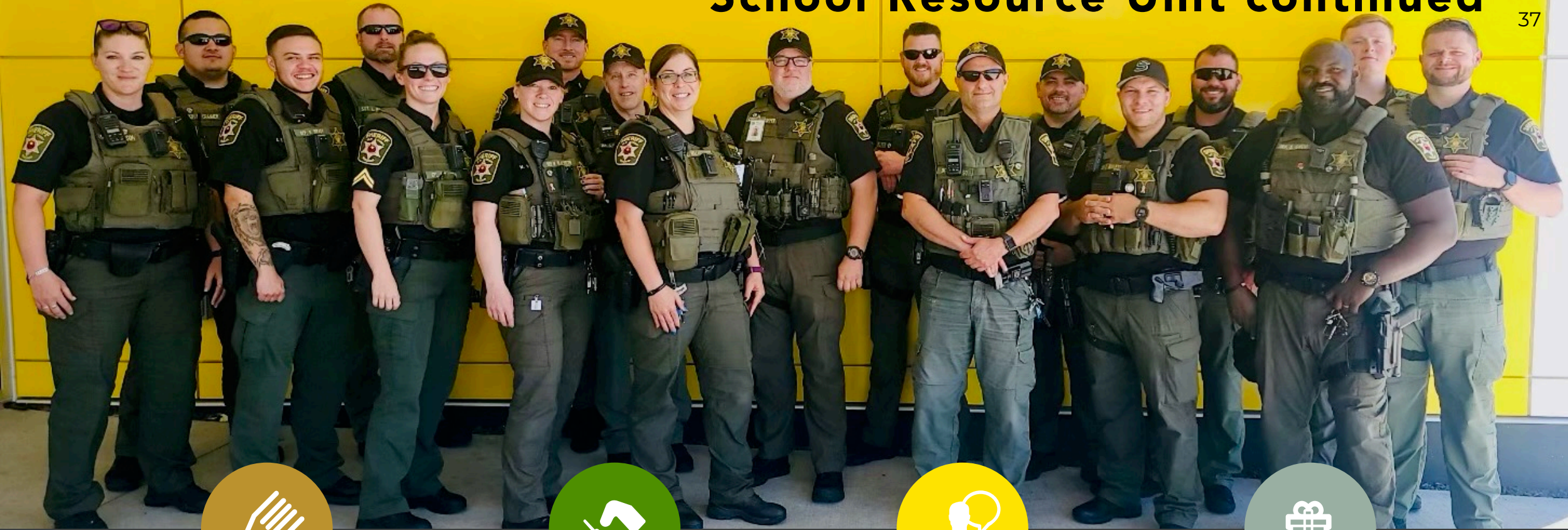
918 school incident reports

Trained all North Kansas City School District staff (5,000+) in active shooter response

35 elementary school students mentored



School Resource Unit continued



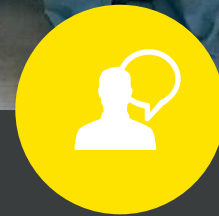
Choices

Deputies taught the Choices course at 13 elementary schools.



Clubs

Deputies started a law enforcement club at one elementary school and a girls' empowerment group at a special education center.



Academy and Career

Deputies instructed the second annual Junior Police Academy during the summer for middle schoolers and led the Law Enforcement Career Path for high schoolers.



Giving

Deputies distributed board games during the holiday break and meals during summer break to families in need.

Traffic Safety Unit



DWI Arrests

The Unit made 203 DWI arrests. Deputy Keagon Reed (pictured at left with Sheriff Akin) made 151 of those, earning him recognition by Mothers Against Drunk Driving and the Missouri Department of Transportation.



Crashes

The Unit investigated 268 crashes.



Traffic Complaints

Traffic Safety Deputies addressed 27 traffic complaints submitted by residents with additional enforcement.



Fatality Reduction

County fatality crashes dropped from 23 in 2021 to 14 in 2022, a 39% reduction. The Traffic Safety Unit formed in October 2021.



SUPPORT SERVICES DIVISION

- Accreditation
- Background Investigation
- Civil Unit
- Clerical Staff
- Professional Standards Unit
- Training Unit

Civil Unit

Status	2021	2022	2021 to 2022 change
Affidavit	54	51	-6%
Citation	9	7	-22%
Child Protection Order	206	200	-3%
Ex-Parte Full Order	377	401	6%
Standard Ex-Parte	550	540	-2%
Execution	1	0	-100%
Ex-Parte Local	1,013	992	-2%
Ex-Parte Notice	511	518	1%
Ex-Parte Summons	75	91	21%
Garnishment	2,014	2,077	3%
Levy	19	28	47%
Motion to Modify Court Order	4	7	75%
Notice of Court Hearing	71	52	-27%

Civil Service Definitions

Affidavit –

A written statement of facts voluntarily made. Usually to modify child support when a child comes of age.

Ex-Parte –

Orders for that can be granted without waiting for a response from the other side. Usually no-contact orders.

Execution –

The execution of a legal order not otherwise categorized herein.

Garnishment –

Served to employers to garnish the wages of an employee who has been court-ordered to pay a debt.

Levy -

The court-ordered seizure and sale of property to collect money for a debt.

Civil Unit Continued

Status	2021	2022	2021 to 2022 change
Nulla Bona	3	1	-67%
Order, Misc.	21	21	0%
Order to Show Cause	133	105	-21%
Petition for Child Support	1	2	100%
Probate	56	71	27%
Post Serve Mail	50	46	-8%
Replevin	10	10	0%
Restitution	460	641	39%
Subpoena	157	93	-41%
Summons	2,478	2,276	-8%
Warrant	0	1	100%
Writ, Misc.	6	7	17%
TOTAL	8,279	8,238	-0.005%

Civil Service Definitions

Nulla Bona –

A writ returned to indicate that no goods were obtained that can be used to satisfy a legal action for debt or damages.

Probate –

Orders from Probate Division, usually for guardianship or mental health treatment

Post Serve Mail –

A type of notice deputies can post at an address without making personal contact. A copy of the notice also is mailed to the address

Replevin –

An action to recover personal property that was unlawfully taken. Usually property purchased on a payment plan for which payments were not made.

Restitution –

Eviction

Subpoena –

An order to appear in court at a specified time and date after a court case has begun

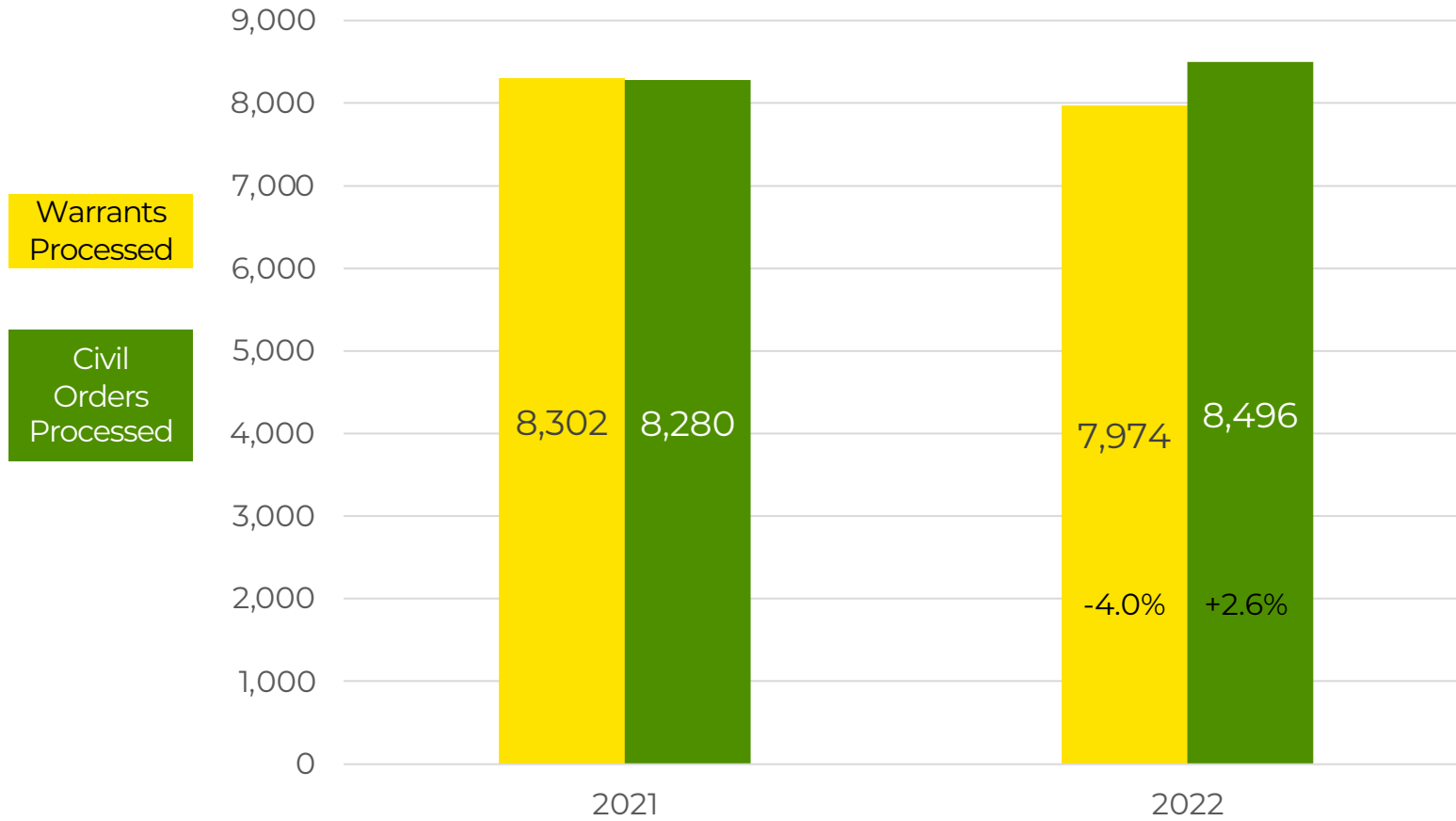
Summons –

Similar to a subpoena – an order to appear in court – but at the beginning of a court case.

Writ –

A court order commanding the recipient to perform or cease a specified act.

Clerical Staff



Average monthly warrant validations

723

Clerical staff members process all warrants and civil orders issued by Clay County Circuit Court.

Accreditation Progress

The Sheriff's Office began the three-year process of earning accreditation from the Commission on Accreditation for Law Enforcement Agencies (CALEA) in October 2021. By the end of 2022:

**106 out of
178
(59%)**

Policies reviewed and updated

**106 out of
170
(62%)**

CALEA standards met

Professional Standards Unit

The Professional Standards Unit is tasked with the objective and impartial fact-finding of complaints against employees. In 2022, the Unit reviewed:

15

Serious cases requiring investigation

15

Minor cases, remanded to division commanders for review





COMMUNITY OUTREACH



Shredding Event

In partnership with Verimore Bank, The Sheriff's Office hosted a free community shredding event to help residents securely destroy sensitive documents.



Book and Puzzle Drive

The Sheriff's Office conducted a first-of-its-kind paperback book and jigsaw puzzle drive for jail inmates in January. The community donated more than 7,000 books and nearly 500 puzzles – so much that they were shared with detention centers in three neighboring counties.



National Night Out

The Annual National Night Out event with Liberty Police Department drew an estimated 1,000 people.



Citizens Academy

The Fall 2022 Citizens Academy had a record-breaking number of applicants. Dozens had to be put on a wait-list for the next class.

Combining the spring and fall classes, nearly 40 people graduated from the Citizens Academy in 2022.



Shop with a Sheriff

46

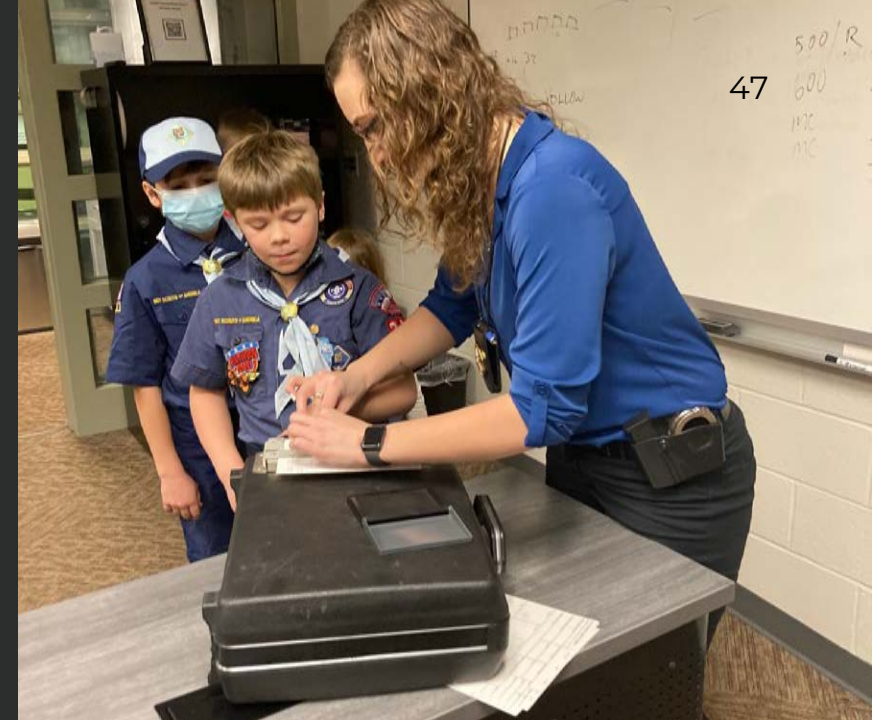
Deputies took 42 children from deserving families in the North Kansas City School District shopping for Christmas gifts for themselves and their families.





Welcoming New Neighbors

Deputies joined with other community partners to welcome refugees from Afghanistan and Ukraine at the North Kansas City YMCA.



Trunk or Treat

The Second Annual Sheriff's Office Trunk-or-Treat drew an estimated 1,500 to 2,000 people and inspired stiff competition over which unit had the best display. Participants voted, and the Detention Division won.



Youth Outreach

Deputies visited numerous schools and engaged with scouting troops to teach children about the Sheriff's Office.

CLAY COUNTY



COURT HOUSE

Clay County Sheriff's Office
12 S. Water St.
Liberty, MO 64068
www.sheriffclayco.org

CLAY COUNTY
Administration Building

FOLLOW
SCHOOL
TO EAST
FOR CLAY
COUNTY
NO



The 2022 Annual Report was produced by
Public Relations Manager Sarah Boyd