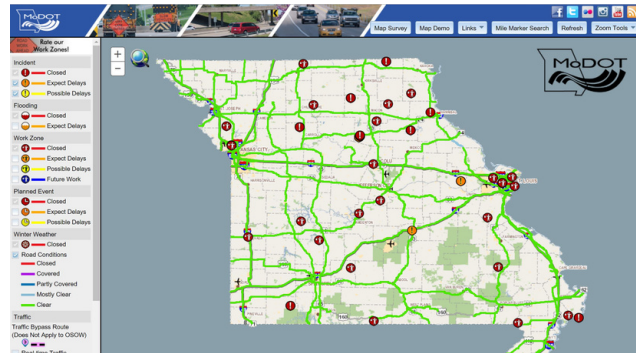


## A man in a dark winter jacket, blue beanie, and gloves is shouting with his arms raised in the air, standing in a snowy field. In the background, a white car is parked with its hood open, suggesting a breakdown or emergency situation. The scene is set in a snowy, wooded area with sunlight filtering through the trees.



- A properly inflated spare tire, wheel wrench and tripod jack
- Jumper cables
- Tool kit and/or a multipurpose utility tool
- Flashlight and extra batteries
- Reflective triangles and brightly colored cloth to make your vehicle more visible
- First aid kit with gauze, tape, bandages, antibiotic ointment, aspirin, a blanket, nonlatex gloves, scissors, hydrocortisone, thermometer, tweezers and instant cold compress
- Nonperishable, high-energy foods, such as unsalted nuts, dried fruits and hard candy, drinking water
- Reflective vest in case you need to walk to get help
- Car charger for your cell phone
- Additional items for cold weather include a snow brush, shovel, windshield washer fluid, warm clothing, cat litter for traction and blankets



For road conditions and  
work zone information,  
check our Traveler  
Information Map at  
[www.modot.org](http://www.modot.org).

# CAR SAFETY

Winter weather can damage a vehicle and become expensive repairs. Regular maintenance along with a few extra precautions to #BePrepared will help reduce expenses and wear and tear on the vehicle. It is recommended to have a mechanic check:

- Antifreeze levels - ensure they are sufficient to avoid freezing.
- Battery and ignition system - should be in top condition and battery terminals should be clean.
- Brakes - check for wear and fluid levels.
- Exhaust system - check for leaks and crimped pipes and repair or replace as necessary. Carbon monoxide is deadly and usually gives no warning.
- Fuel and air filters - replace and keep water out of the system by using additives and maintaining a full tank of gas.
- Heater and defroster - ensure they work properly.
- Lights and flashing hazard lights - check for serviceability.
- Oil - check for level and weight. Heavier oils congeal more at low temperatures and do not lubricate as well.
- Thermostat - ensure it works properly.
- Windshield wiper equipment - repair any problems and maintain proper washer fluid level.



## THE NATIONAL WEATHER SERVICE - KANSAS CITY

"Winter storms can bring snow, sleet, and freezing rain across the entire United States and its territories. Even Hawaii gets snow in its Big Island, and major cities as far south as Atlanta and Dallas have been paralyzed by snow and ice. Blizzards occur when strong wind causes blowing snow and whiteout conditions, making roads impassable. Thousands of people are injured or killed every year in traffic accidents related to slippery roads from winter storms."

The Winter (weather.gov) website is designed to teach you how to stay safe before, during and after a winter storm. The National Weather Service Kansas City website offers information on winter alerts, science and hazards, snow coverage maps, and information describing the different types of winter storms. If you or someone you know has been a victim of a winter storm, please share your story so we can prevent others from becoming a victim.

WPC Winter Weather Forecasts (noaa.gov) | National Operational Hydrologic Remote Sensing Center - The ultimate source for snow information (noaa.gov)





# SPACE HEATER SAFETY

## Space Heater Safety Tips

Space heaters are a great way to warm specific rooms in your home without having to crank up the thermostat, but using space heaters does not come without risk. Use the tips below to keep your home safe.

DO: Plug your space heater directly into the wall outlet.



DO: Keep your space heater in low-moisture rooms.

DO: Keep your space heater at a safe distance (at least 3 feet) from kids, pets and flammable items.

DO: Buy a unit with an automatic shutoff in case the unit tips over, or you forget to shut it off.



DO: Always follow the directions and take a broken space heater to a qualified appliance service center.



- Keep the heater at least 3 feet away from anything that can burn, including people.
- Choose a heater with a thermostat and overheat protection.
- Place the heater on a solid, flat surface.
- Make sure your heater has an auto shut-off to turn the heater off if it tips over.
- Keep space heaters out of the way of foot traffic, never block an exit.

## 5 Things to Know about Winter Weather Forecasts

1

### Snow or ice totals can vary greatly over short distances

A heavy snow band may form, dropping more snow in one location while significantly less snow falls a short distance away.



2

### Winter forecasts can change frequently

Forecasts may change as new model data becomes available. Always check [weather.gov/kc](http://weather.gov/kc) for the latest information.

3

### Focus more on the winter storm's impacts

Don't focus too much on exact numbers, and consider the full range of possibilities.



4

### Know your winter weather terminology

If a Watch is issued, get prepared for hazardous weather. If an Advisory or Warning is issued, take action – hazardous weather is occurring or will occur soon.

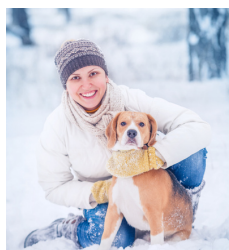
5

### Rely on a dependable source for weather info

Choose your information sources wisely, and follow a name or organization you know and trust.



For more information on winter weather safety, visit: [weather.gov/winter](http://weather.gov/winter)



## Pet Friendly Winter Tips

### HIDING IN THE HOOD

Warm engines attract cats and small animals. Bang on your hood before starting the engine.



### LIMIT CAR TRAVEL

Never leave your pet in your car.



### GET COZY

Provide warm beds for naps.



### STORM PREP

Create disaster kit with food, water and medication that can last 5 days.



### PAW PATROL

Check regularly and wipe away salt after outdoor walks.



### BE ALERT

Signs of hypothermia include: shivering, whining, sluggish or anxious behavior.



### SWEATER WEATHER

Play dress up with cozy sweaters and coats.



### STAY INDOORS

Keep cats and dogs inside. Consider providing dry, well-insulated shelter for feral and neighborhood cats.



# WORDS TO KNOW

## Freezing Rain

Rain that freezes when it hits the ground. This makes a layer of ice on roads, walkways, trees, and power lines.

## Frostbite

A medical condition when skin or body tissue is damaged from freezing.

## Hypothermia

A sickness when your body temperature drops below what is needed to be healthy and work properly.

## Sleet

Rain that turns to ice before reaching the ground.

## Winter Weather

A warning issued when conditions could cause dangerous situations (such as icy roads or sidewalks).

## Winter Storm Watch

A warning issued when severe winter conditions may affect your area.





Congratulations Anne!

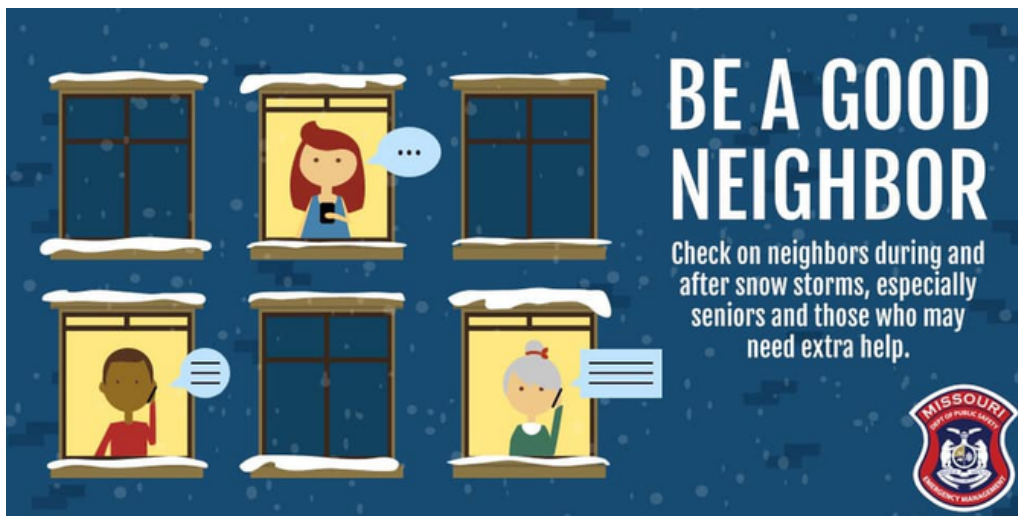
The Clay County Emergency Management Division is proud to announce that EM Planner, Anne Poelzl, has completed the 12th Master Public Information Officer course offered by Law Enforcement Executive Development Association (FBI-LEEDA).

This course builds on crisis management skills in tabletop exercises designed to build the framework for a crisis communication manual. <https://fbileeda.org/page/MPO>

Great Work Anne! Congratulations!!

#emergencymanagement #CrisisCommunication

[www.claycountyemergencymanagement.com](http://www.claycountyemergencymanagement.com)



If you're able to, after winter storms & especially during dangerous wind chills like today, it's a good idea to check in with your neighbors & make sure they're okay. Just a moment of your time can mean a lot to someone who may need extra help & you could even save a life.

Severe Winter Weather | SEMA (mo.gov)

Severe Winter Weather | SEMA (mo.gov)



Clay County Emergency  
Management  
14 S Water Street  
Liberty, MO 64068  
816-407-3730  
[ccsoem@sheriffclayco.com](mailto:ccsoem@sheriffclayco.com)

