

CLAY COUNTY EMERGENCY MANAGEMENT

Monthly Newsletter

ARE YOU
PREPARED?

Learn the signs of, and basic treatments for, frostbite and hypothermia.

Frostbite causes loss of feeling and color around the face, fingers and toes.

- **Signs:** Numbness, white or grayish-yellow skin, firm or waxy skin.
- **Actions:** Go to a warm room. Soak in warm water. Use body heat to warm. Do not massage or use a heating pad.

Hypothermia is an unusually low body temperature. A temperature below 95 degrees is an emergency.

- **Signs:** Shivering, exhaustion, confusion, fumbling hands, memory loss, slurred speech or drowsiness.
- **Actions:** Go to a warm room. Warm the center of the body first—chest, neck, head and groin. Keep dry and wrapped up in warm blankets, including the head and neck.

Winter storms create a higher risk of car accidents, hypothermia, frostbite, carbon monoxide poisoning, and heart attacks from overexertion. Winter storms including blizzards can bring extreme cold, freezing rain, snow, ice and high winds.

Winter Weather | Ready.gov

TREATING HYPOTHERMIA AND FROSTBITE



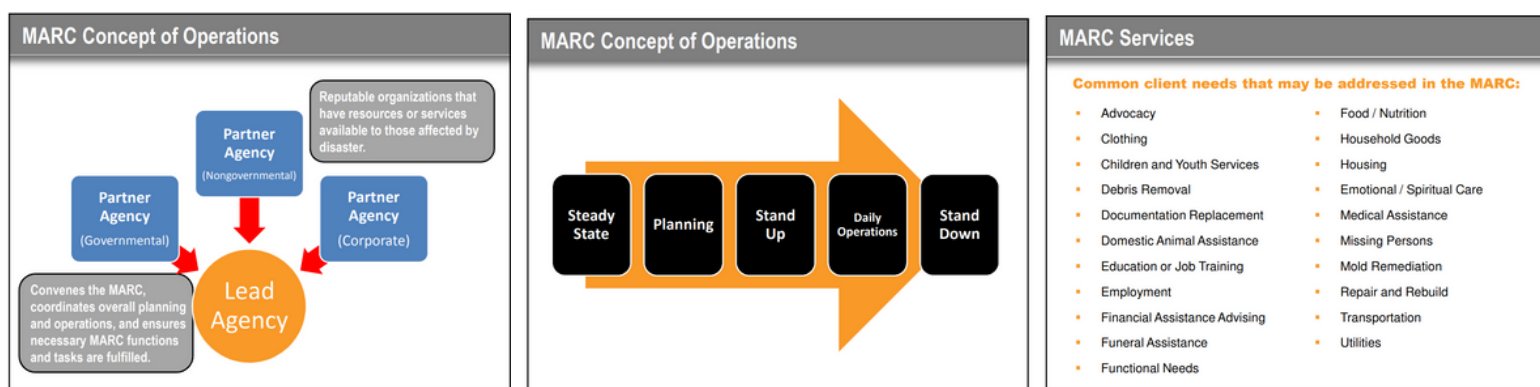
SIGNS AND SYMPTOMS OF HYPOTHERMIA



A place where community agencies join together to help THOSE DEVASTATED BY DISASTER.

A MARC is: A single location where partner agencies, both public and private, come together to provide FREE assistance to those affected by the disaster. In a MARC, many organizations can offer assistance and the client only needs to go to one site to access a variety of resources.

This concept is not new: Multi-agency assistance centers have been used on previous disaster operations. The term MARC became prominent after the Joplin and Moore tornadoes. In 2014, a inter-agency working group was formed to develop a planning guide for MARC operations. The culmination of that group's efforts is the Multi-Agency Resource Center (MARC) Planning Guide.



JEFFERSON CITY, Mo. (Edited News Release/KY3) - Missouri Governor Mike Parson requested the Federal Emergency Management Agency (FEMA) approve a major disaster declaration for Missouri to provide federal assistance to a total of seven counties in response to severe storms and deadly tornadoes that swept across the state on the evening of December 10, resulting in extensive destruction.

"Our local, state, and federal assessment teams have documented extensive damage to electric power systems and other public infrastructure as a result of the severe storms," Governor Parson said. "Federal disaster assistance will be necessary to complete the permanent repair work and alleviate the burden of the costly damage experienced in these hard-hit communities."

COVID 19 BOOSTER CLINIC



On December 17, 2021 the nurses from the Clay County Public Health Center administered COVID 19 Booster vaccines to detainees and personnel. The staff of the Clay County Detention Center assisted in identifying those who were qualified and interested in receiving a vaccine booster. The Clay County Emergency Management team coordinate with the Sheriff's Office and County Facility personnel to register those interested. Thank you to the nurses from Clay County Public Health Center and the Liberty Fire Department for your time and support.



State Emergency Management Agency - SEMA

The Emergency Management Training (EMT) curriculum delivered by SEMA offers an extensive array of training opportunities for State and local emergency managers, public officials, members of volunteer relief organizations, and professionals in related fields. The EMT program has proven itself to be a comprehensive and effective vehicle to train state and local officials in disaster mitigation, preparedness, response, and recovery. Jurisdictions across Missouri, can and do cope with disaster by preparing in advance through training activities and by using the skills learned to build local teams and coalitions that respond to emergencies. - STEMS (sematraining.com)



STEMS (sematraining.com)

BUILDING RELATIONSHIPS



Clay County Detention coordinating with Clay County EM on future plans.





**TRI-COUNTY
MENTAL HEALTH
SERVICES, INC.**

GET HELP TODAY | 816-468-0400



**NORTHLAND REGIONAL
CHAMBER of COMMERCE**



www.claycountyemergencymanagement.com

